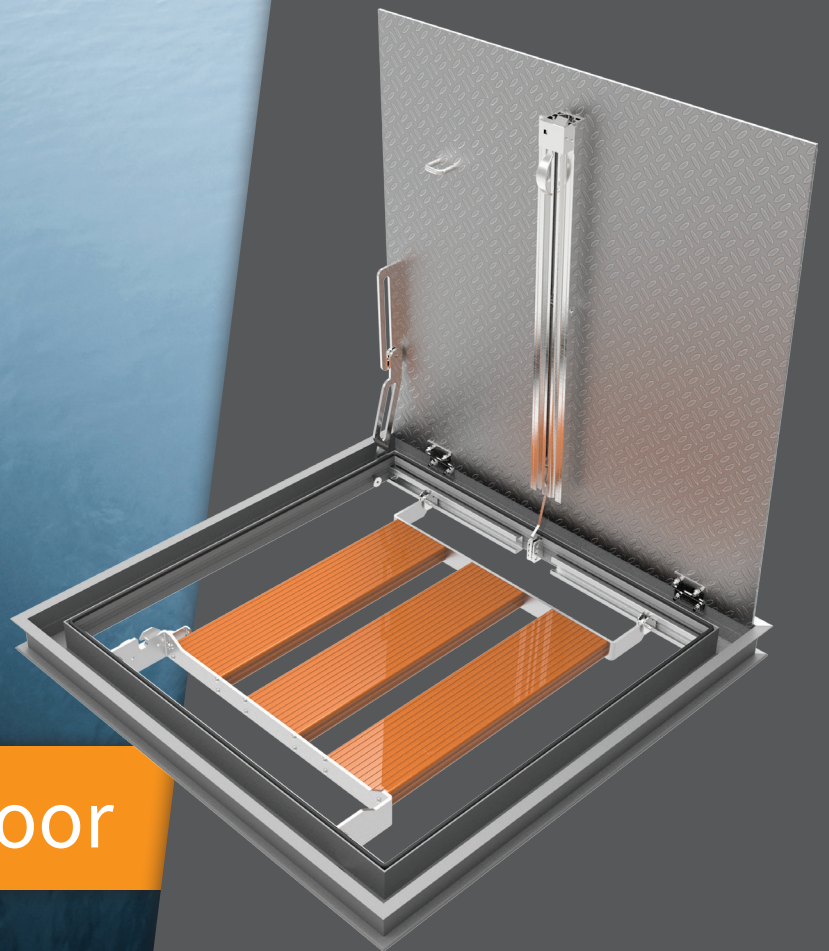




Access that won't
drain your wallet

The **NEW** industry
standard in Drainable
Floor Doors.

- Widest range of options and sizes available
- Non-slip safety grate rails with nut rails
- Minimized components with integrated spring and stiffener design



Drainable Floor Door

Drainable

FLOOR DOOR, 300PSF

Babcock-Davis' newly redesigned Drainable Floor Door is intended for standard-duty exterior or high moisture areas where liquid flow is required. The frame is constructed with a gutter channel for runoff into a drainage system and includes an odor tight gasket.



FEATURES

LARGEST CLEAR OPENING The redesigned components are engineered with a maximum clear opening per comparable size against the competition.

OPTIONAL SAFETY GRATE Add additional safety and security to your floor door with a grate and nut rail. The grate is serrated for added slip resistance and allows for a 6 inch testing area.

DETAILS

LOAD 300 psf live load

MATERIAL Aluminum: 1/4 inch, mill finish with gray primer on exterior frame

COVER Diamond tread plate

FRAME Formed gutter frame with a 1-1/2 inch drain coupling welded under frame for pipe connection

INSTALLATION Cast-In with c-channel for concrete pour

SPRING Coil type 17-7 Stainless Steel enclosed in Type 316 Stainless Steel telescopic tubes

HINGES Heavy duty Type 316 Stainless Steel

HOLD OPEN ARM Type 316 Stainless Steel automatic hold open arm locks cover in open position

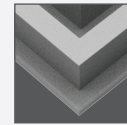
LATCH Slam latch Type 316 Stainless Steel with inside lever handle, includes removable 5/16 inch steel square "L" handle and threaded plug

MATERIALS



Aluminum

INSTALLATION



Cast-in

ORDER GUIDE

MODEL	MATERIAL	WIDTH	X	LENGTH	COVER	OPTIONS
BFDDP			X			AL -
	A 1/4" Aluminum	Standard Sizes (W x L)			S Single Door D Double Door	Locks Finishes Gaskets Operation Safety Skirting Other
		Single Door	Double Door			
		24" x 24"	48" x 48"			
		30" x 36"	48" x 72"			
		36" x 36"	60" x 60"			
		42" x 42"				

Additional sizes available, call 888.412.3716 for more information.
Download Drawings, CAD, Specs, and LEED documents at www.babcockdavis.com

